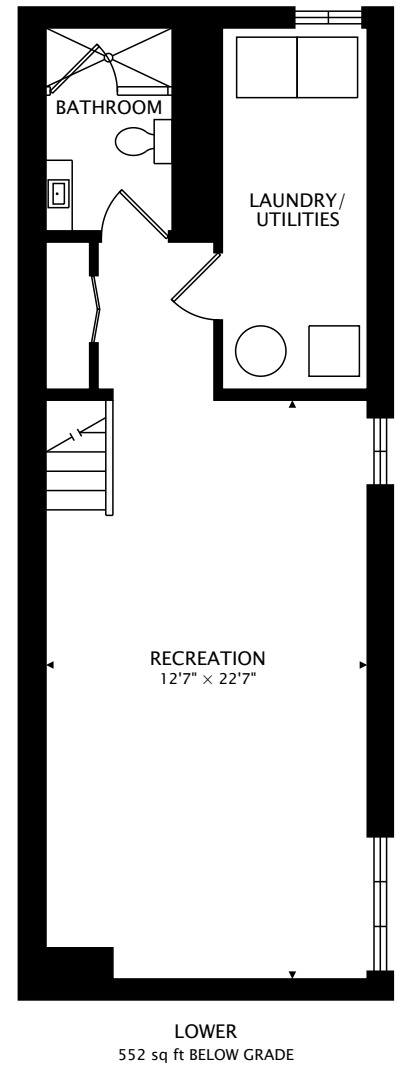
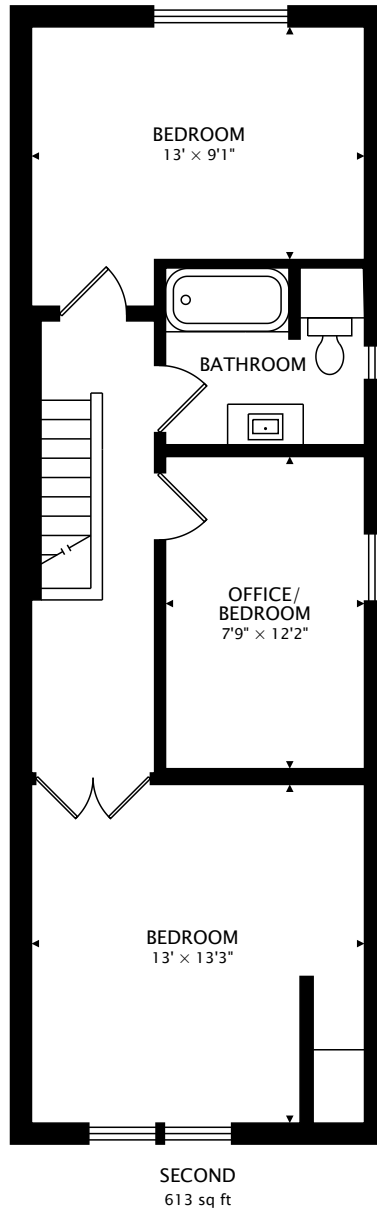
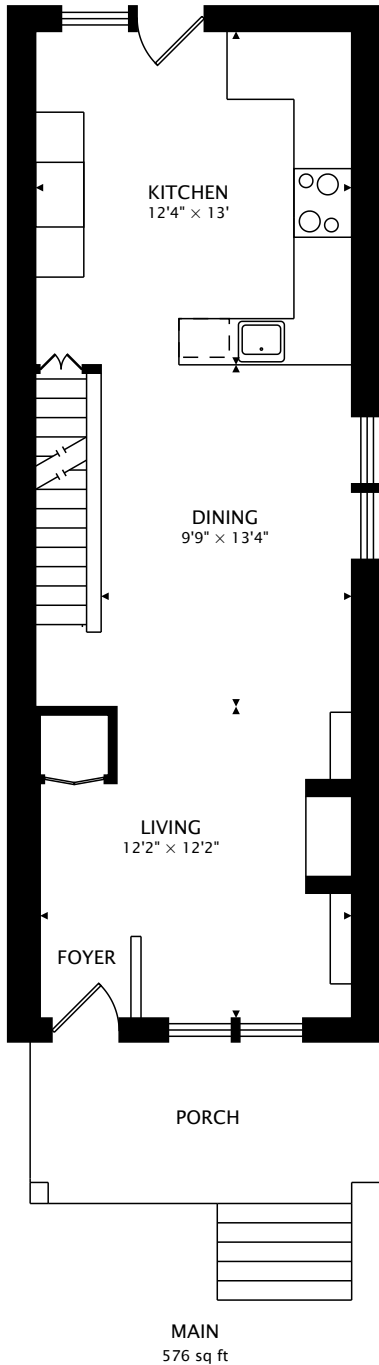


205 BROWNING AVENUE TORONTO, ONTARIO M4K 1X1



TOTAL
1189 sq ft + 552 sq ft BELOW GRADE



CAPTURED ON: 24 JUN 2021
DIMENSIONS, AREAS, LAYOUTS AND DETAILS ARE APPROXIMATE
AND SHOULD BE CONSIDERED ILLUSTRATIVE ONLY.

Maggie Lind
Sales Representative
Chestnut Park
D: 416-998-5546
maggie@maggielind.com
<https://www.chestnutpark.com/>